

New

Smarter Remote Monitoring and Control

Gather and analyze more data in real-time to make smarter, data-driven decisions



Effective Local Status Indication

Reliable visual and audible signals with a built-in counting feature

Visualize More Data Points

Equipped with 8 contact inputs enabling acquisition of up to 255 data codes

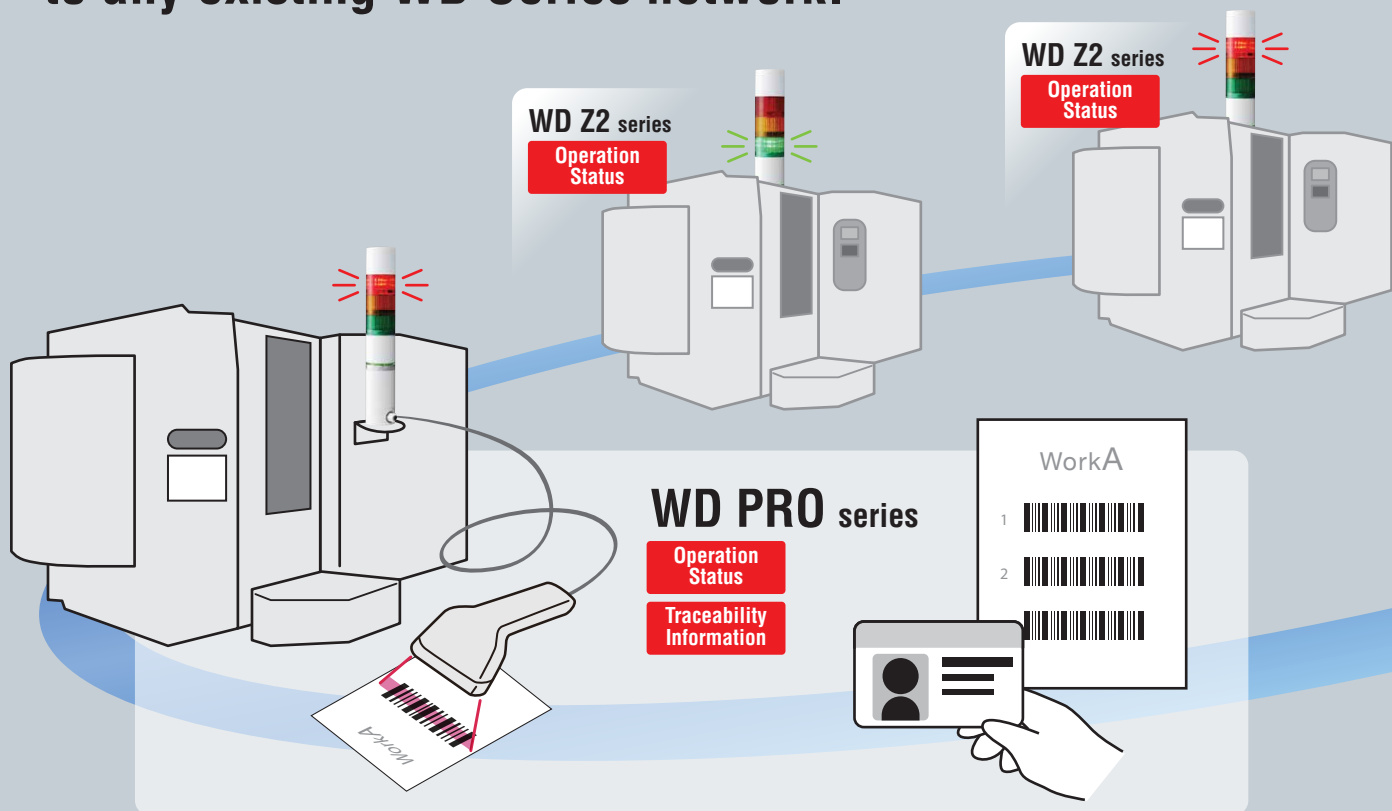
Acquire Additional Levels of Information

Features a serial communication interface to attach devices, such as a barcode reader

Improve Work Efficiency

Features 2-way wireless communication to remotely trigger tower light signals

The WD Pro adds a myriad of additional features to any existing WD Series network.



Wireless Data Acquisition System WD PRO series



WD PRO Transmitter
WDT-6LR-Z2-PRO

Compatible base unit
WD PRO series

Current consumption **MAX 110mA** (Total value of transmitter and base unit)

Radio wave reaching distance without obstacles
20m ^{*3}



Contact Input -
Serial Communication Base Unit
WDB-D80S-PRO

**Input
Serial base unit**

Transmitter
Transmitter for WD PRO

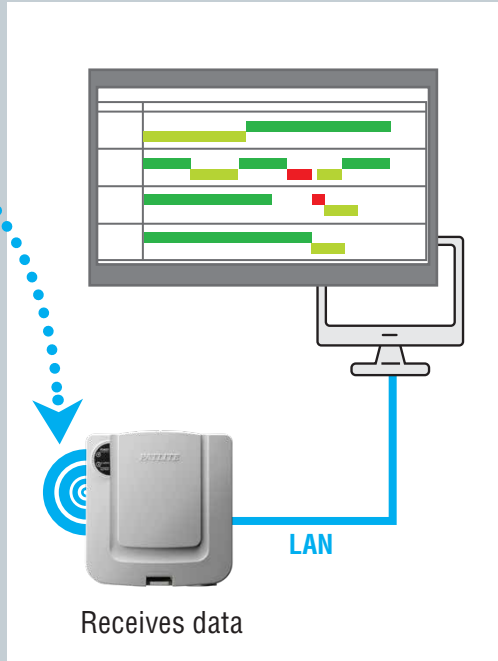
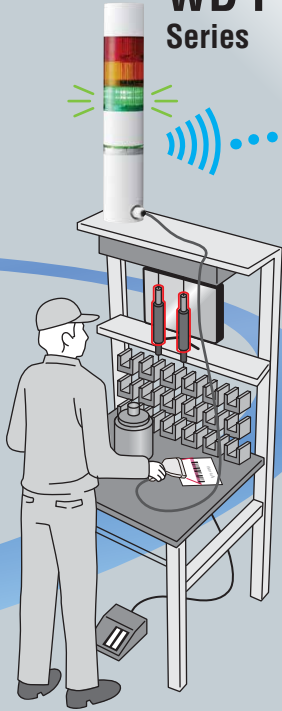


WD PRO Transmitter
WDT-6LR-Z2-PRO

Contact Input -
Serial Communication Base Unit
WDB-D80S-PRO

*To be installed on the WDB-D80S-PRO base unit. (not compatible with the LR6 body unit)

WD PRO Series



WD System Setup Software
WDS-WIN01 Ver. 1.03 or later



Data collection



Wireless Data Acquisition System WD-Z2 series

Transmitter

Transmitter for LR6/LR5

*Not compatible with WD PRO Series



Transmitter for the LR6 signal light
WDT-6LR-Z2

Compatible signal light model
LR6 series *1

Current consumption
MAX 55mA

Radio wave reaching distance without obstacles
20m *3



Transmitter for the LR5 signal light
WDT-5LR-Z2

Compatible signal light model
LR5 series *1

Current consumption
MAX 55mA

Radio wave reaching distance without obstacles
20m *3

Receiving machine



Receiver **WDR-LE-Z2**

Recommended number of connected transmitters
20 Max. 30 *2

Connection method **LAN/USB**

Current consumption **typ. 65mA**

Multiple receivers can operate at the same time. *4

*1: There are some restrictions on compatible signal lights, so please contact Patlite for details. *2: Due to the properties of radio waves, this number may differ according to the location of the receiver, the communication environment, and the communication frequency. *3: This is a reference value. The actual value may differ due to the properties of radio waves. *4: Multiple receivers cannot operate at the same time if a USB connection is used. (Contact Patlite for details.)

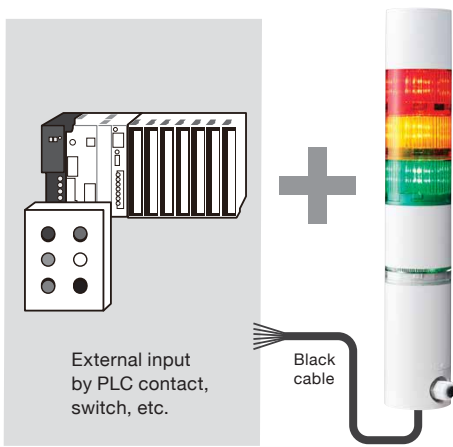
More Data Means Smarter Decision-Making

The WD PRO Series features 2-way wireless communication for better plant-wide visibility while enabling you to gather more data points for better predictive maintenance, quicker problem resolution, and OEE improvement.

Understand the cause of equipment shutdown

8 points of contact input

Up to 765 data codes can be acquired to identify exact cause and timing of equipment malfunctions.



Error code table

Signal tower Information 3 points × External contact input 8 points → **765 factor data can be acquired**
*When using 3 segment signal tower

Decimal number	Contact input (ON - ● OFF - ○)							
	①	②	③	④	⑤	⑥	⑦	⑧
① Red	●	○	○	○	○	○	○	○
② Amber	○	●	○	○	○	○	○	○
③ Green	●	●	○	○	○	○	○	○
253	●	○	●	●	●	●	●	●
254	○	●	●	●	●	●	●	●
255	●	●	●	●	●	●	●	●

Equipment operation status × Detailed information → **Detailed data of equipment operation / non-operation**

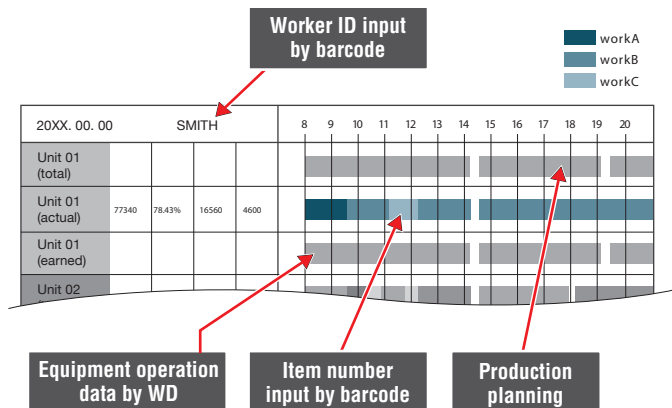
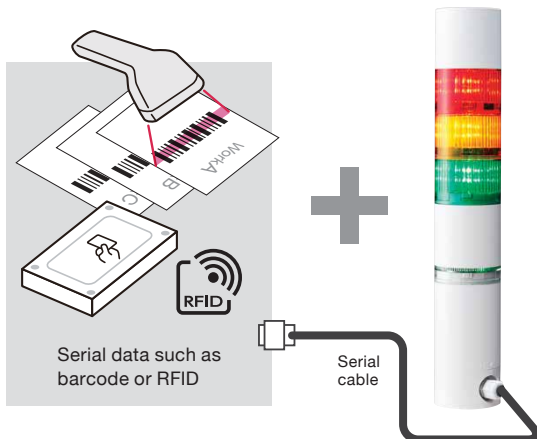
Cause-based Pareto analysis



Acquire additional levels of information

Serial Cable

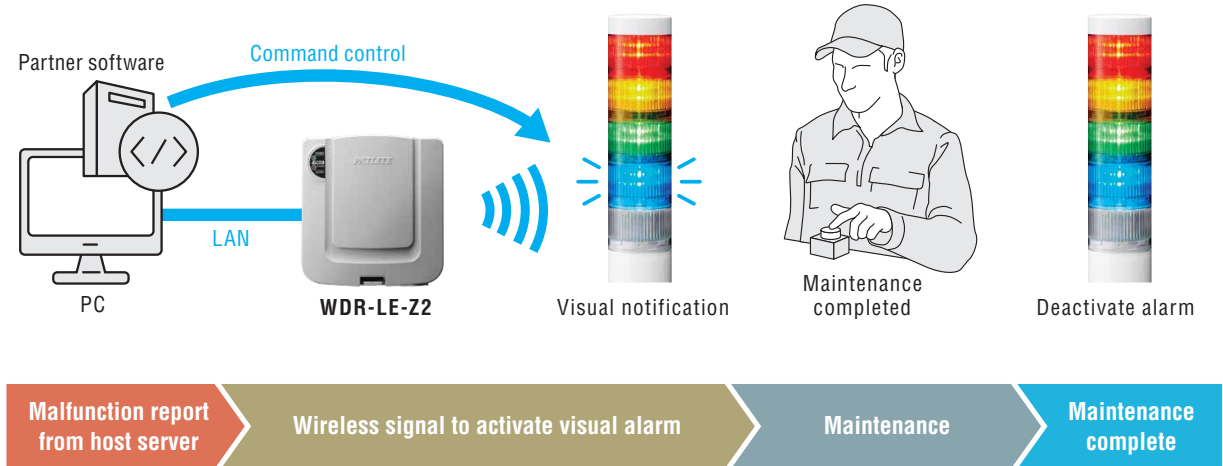
Connect a bar code reader to the WD PRO to trace employee data for greater control over products and process quality.



Eliminate downtime

Remote Signaling

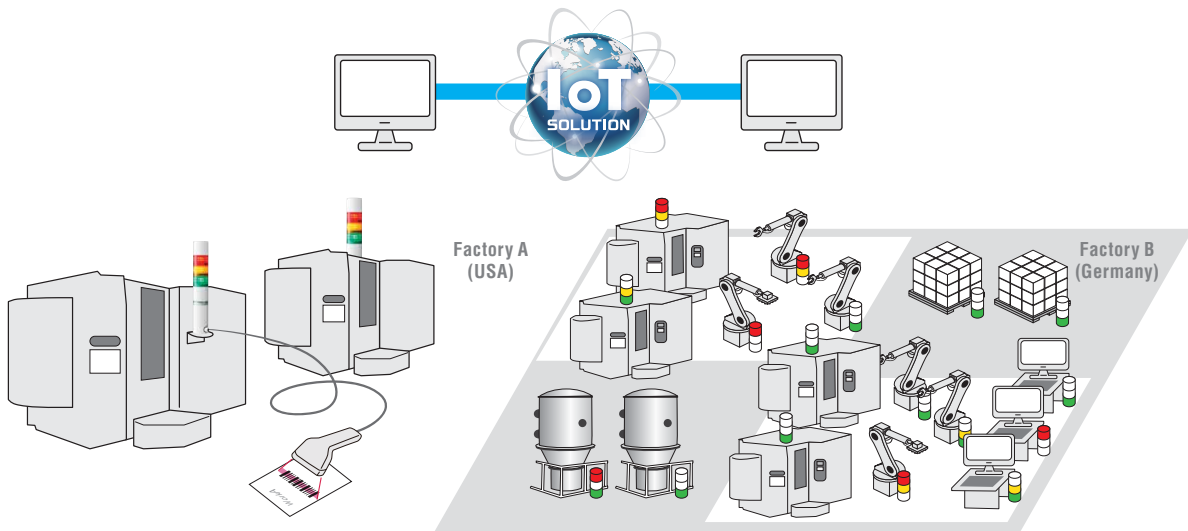
Notifies remote operators instantly of equipment abnormalities, as well as the type of maintenance required.



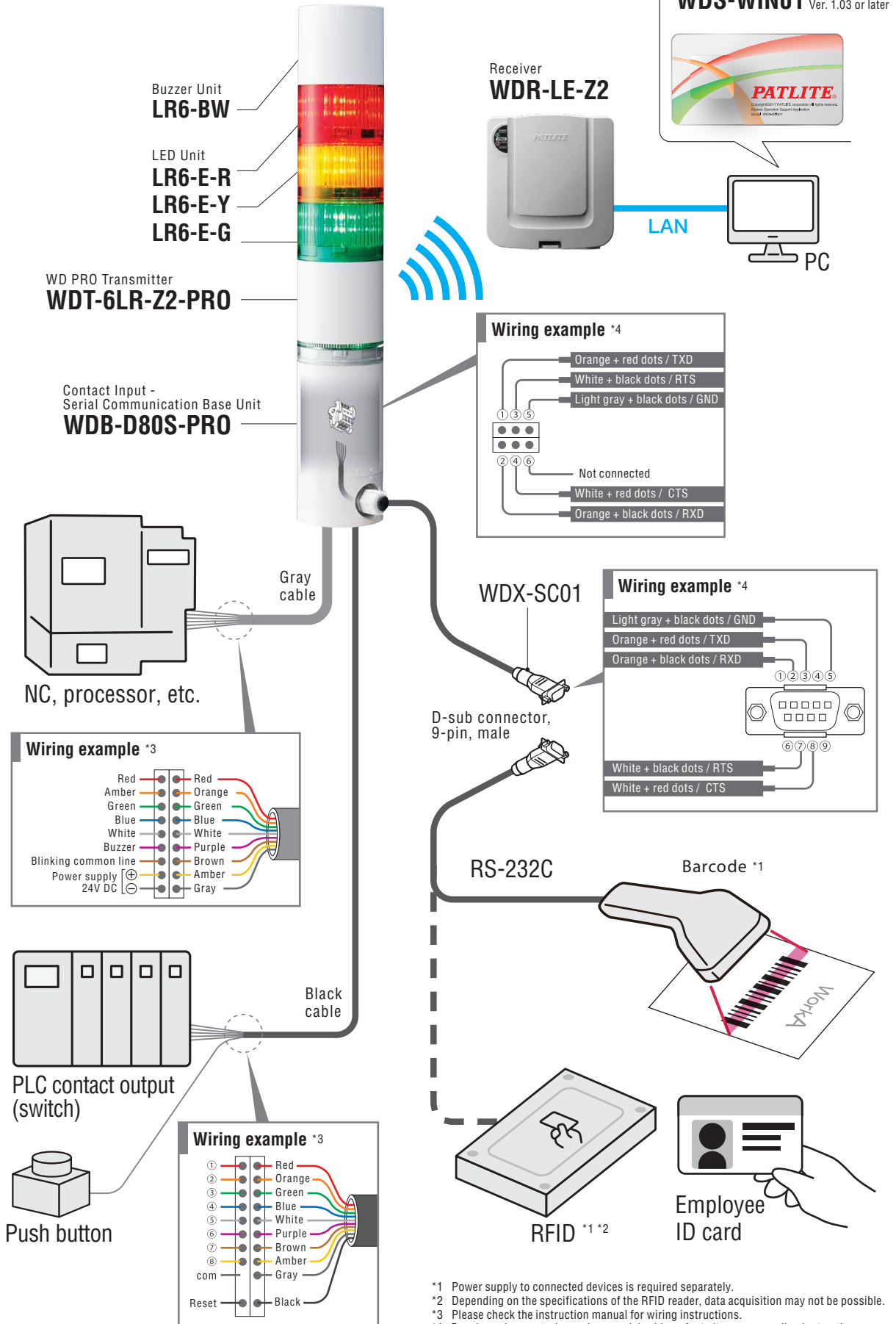
Monitor multiple facilities remotely and in real-time

Supported areas (as of June 2019) | WD-Z2: 41 countries | WD PRO: USA, China, EU, and Japan

Utilize compatible software to monitor multiple factories located across the globe.



WD PRO System Configuration



*1 Power supply to connected devices is required separately.
 *2 Depending on the specifications of the RFID reader, data acquisition may not be possible.
 *3 Please check the instruction manual for wiring instructions.
 *4 For pin assignment when using a serial cable, refer to its corresponding instructions manual.

WDS-WIN01 CSV Output Sample Ver. 1.03 or later

Date Time	MAC address	user name	Red information	Amber information	Green information	WDT Surveillance intelligence	RS-232C data (ASCII code)	External input information (Decimal number)	Clear input information
2019/3/15 9:44	6CE4DAFFFE019925	machine 1	0	0	0	9		0	0
2019/3/15 9:44	6CE4DAFFFE019925	machine 1	0	0	1	9	012035 SMITH	0	0
2019/3/15 9:44	6CE4DAFFFE019925	machine 1	0	0	1	9	20190315 AANKBB 200pc	0	0
2019/3/15 9:52	6CE4DAFFFE019925	machine 1	1	0	0	9		0	0
2019/3/15 9:52	6CE4DAFFFE019925	machine 1	1	0	0	9		155	0
2019/3/15 10:15	6CE4DAFFFE019925	machine 1	0	0	1	9		0	0
2019/3/15 10:15	6CE4DAFFFE019925	machine 1	0	1	0	9		0	0
2019/3/15 10:20	6CE4DAFFFE019925	machine 1	0	1	0	9	MATERIAL SHORTAGE	0	0
2019/3/15 10:25	6CE4DAFFFE019925	machine 1	0	0	1	9		0	0
2019/3/15 11:05	6CE4DAFFFE019925	machine 1	0	1	0	9		0	0
2019/3/15 11:05	6CE4DAFFFE019925	machine 1	0	1	0	9	END	0	0
2019/3/15 11:06	6CE4DAFFFE019925	machine 1	0	0	0	9		0	0
2019/3/15 13:05	6CE4DAFFFE019925	machine 1	0	1	0	9	20190315 CCNKDD 300pc	0	0

Data sample

- ① Signal Tower information (6 inputs = Red, yellow, green, blue, white, buzzer) ③ Serial data (RS-232C = ASCII code) 2-10-16 can be selected by setting.
 ② External configuration information (8 inputs = Binary 0 to 255) ④ Reset input information

Specifications

Model code	WD PRO Transmitter WDT-6LR-Z2-PRO	Contact Input - Serial Communication Base Unit WDB-D80S-PRO
Rated Voltage	DC 24V	
Size	Φ60	
Protection Rating	IP65	
External Contact Input	—	Signal tower inputs (red, yellow, green, blue, white, buzzer); 8 external contact inputs; 1 reset input; serial communication input
Wireless specification	2.4GHz Zigbee	—
Corresponding receiver	WDR-LE-Z2	—

Options

Serial Cable WDX-SC01



Installation example

Solid Color LR6-E-R/Y/G/B/Z



Clear Globe LR6-E-RZ/YZ/GZ/BZ



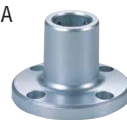
Buzzer Unit LR6-BW



Upper Bracket SZP-004W



Pole Bracket SZ-016A



SZ-010



Wall mount Bracket SZK-003W



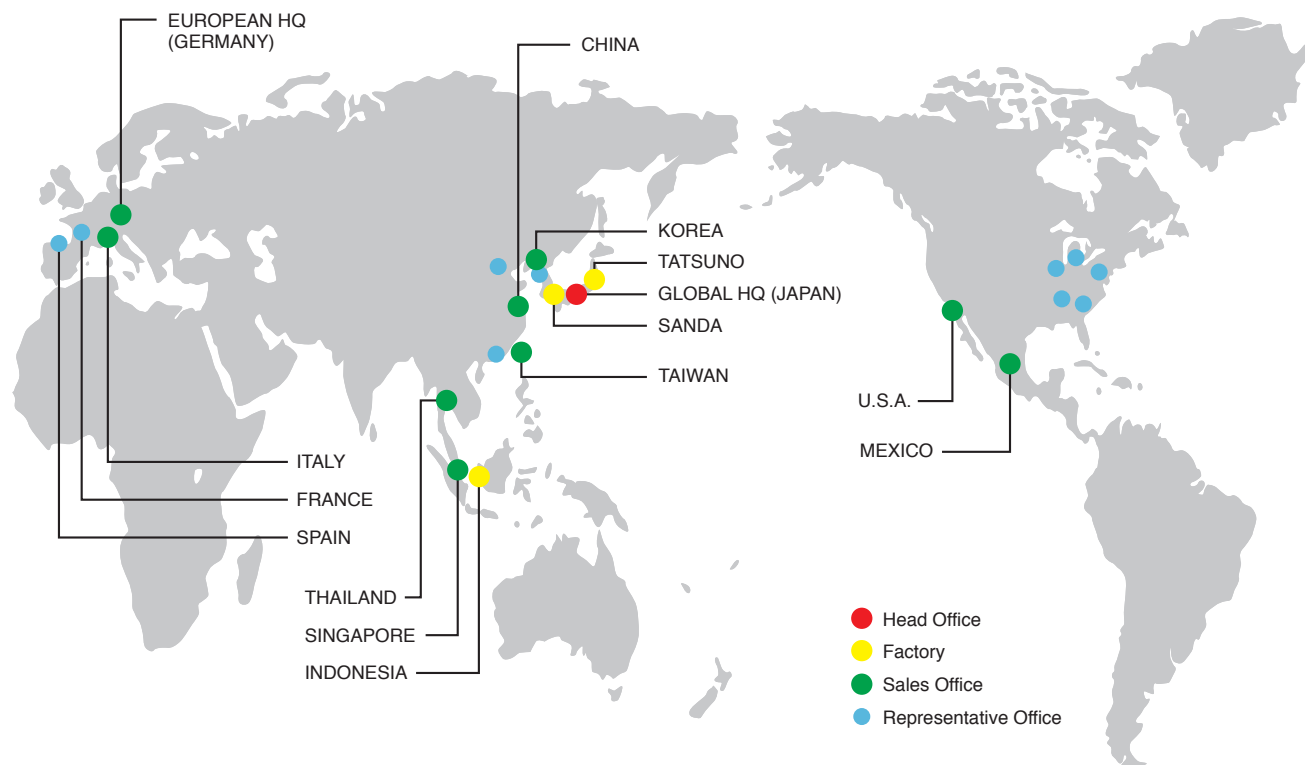
SZK-001U



Pole POLE-800A21 800mm POLE-300A21 300mm POLE-100A21 100mm



PATLITE Global Network



PATLITE Corporation

4-1-3, Kyutaromachi, Chuo-ku, Osaka 541-0056 Japan
 International Sales Division
 TEL.+81-6-7711-8953 FAX.+81-6-7711-8961 E-mail: overseas@patlite.co.jp

PATLITE (U.S.A.) Corporation

20130 S. Western Ave. Torrance, CA 90501, U.S.A.
 TEL.+1-310-328-3222 FAX.+1-310-328-2676 E-mail: sales@patlite.com

PATLITE (SINGAPORE) PTE LTD

No.2 Leng Kee Road, #05-01 Thye Hong Centre, Singapore 159086
 TEL.+65-6226-1111 FAX.+65-6324-1411 E-mail: sales@patlite.com.sg

PATLITE (CHINA) Corporation

Room 1102-1103, No.55, Lane 777, Guangzhong Road (West), Zhabei District, Shanghai, China 200072
 TEL.+86-21-6630-8969 FAX.+86-21-6630-8938 E-mail: sales@patlite.cn

PATLITE Europe GmbH

Am Soeldnermoos 8, D-85399 Hallbergmoos, Germany
 TEL.+49 -811-9981-9770-0 FAX.+49-811-9981-9770-90 E-mail: info@patlite.eu

PATLITE KOREA CO., LTD.

A-2603, Daesung D-POLIS, 606, Seobusaet-gil, Geumcheon-gu, Seoul, 08504, Korea
 TEL.+82-2-523-6636 FAX.+82-2-861-9919 E-mail: sales@patlite.co.kr

PATLITE TAIWAN CO., LTD.

2F-1, No.215, Sec. 2, Chengde Rd., Datong Dist., Taipei City 10364, Taiwan (R.O.C.)
 TEL.+886-2-2555-1611 FAX.+886-2-2555-1621 E-mail: info@patlite.tw

PATLITE (THAILAND) CO., LTD.

Olympia Thai Tower, 15th Floor 444 Ratchadapisek Road Samsennok, Huay Kwang Bangkok 10310, Thailand
 TEL.+66-2-541-5431 FAX.+66-2-541-5429 E-mail: sales_150716@patlite.co.th

PATLITE MEXICO S.A. de C.V.

Plaza de La Paz No. 102, int. 712 Guanajuato Puerto Interior, Silao, Gto, C.P.36275, Mexico
 TEL.+52-472-748-9124 E-mail: ventas@patlite.com.mx

www.patlite.com

●PATLITE, the PATLITE logo are either registered trademarks or trademarks of PATLITE Corporation in JAPAN and/or other countries.
 ●The names of other companies and products are trademarks or registered trademarks of their respective companies.

CAUTION

To ensure correct use of these products, read the "Instruction Manual" prior to use. Failure to follow all safeguards can result in fire, electric shock, or other accidents. Specifications are subject to change without notice.

O-AI05 EN 1906 A